



# Detection of Contagious Caprine Pleuropneumonia and Concurrent Diseases in Outbreaks Presenting with Respiratory Signs in Small Ruminants in Tanzania

Andrew Chota<sup>1,2\*</sup>, Gabriel Shirima<sup>2</sup> and Lughano Kusiluka<sup>3</sup>

<sup>1</sup>Tanzania Veterinary Laboratory Agency, P.O.Box 9254, Nelson Mandela Road, Temeke Veterinary, Dar es Salaam, Tanzania.

<sup>2</sup>Nelson Mandela African Institution of Science and Technology, P.O.Box 447, Tengeru, Arusha, Tanzania.

<sup>3</sup>Mzumbe University, P.O.Box 1, Mzumbe, Tanzania.

## Authors' contributions

*This work was carried out in collaboration among all authors. Author AC designed the study, performed the field and lab work, analysed data, wrote the first draft of the manuscript and incorporated all the comments from the supervisor's authors GS and LK. Author GS approved the study designs, performed and supervised the laboratory work, advised on data analysis and scrutinized the first manuscript. Author LK approved the study design, advised on the laboratory work, supervised on manuscript preparation and scrutinized the manuscript. All authors read and approved the final draft of the manuscript.*

## Article Information

DOI: 10.9734/IJTDH/2020/v41i730302

### Editor(s):

(1) Dr. Cihad Dunder, Ondokuz Mayıs University, Turkey.

### Reviewers:

(1) Asmaa Bakeir Hamady Yousef, Suez Canal University, Egypt.

(2) R. Kingsy Grace, Sri Ramakrishna Engineering College, India.

(3) Ezzouine Hanane, University Hassan II, Morocco.

Complete Peer review History: <http://www.sdiarticle4.com/review-history/58592>

Original Research Article

Received 18 April 2020

Accepted 24 June 2020

Published 06 July 2020

## ABSTRACT

**Aims:** To establish the prevalence and concurrent diseases in outbreaks presenting with respiratory signs, major associated clinical signs and postmortem lesions and proportions of those diseases in clinically and autopsied small ruminants for a proper diagnosis and control strategies.

**Study Design:** Purposive outbreaks investigation.

**Place and Duration of Study:** Department of Global Health, School of Life Science and Bio-

\*Corresponding author: Email: [chotaandrew@gmail.com](mailto:chotaandrew@gmail.com);

Engineering (LiSBE), Nelson Mandela Institution of Science and Technology (NM-AIST) between September 2016 and December 2018.

**Methodology:** We included investigations of outbreaks of diseases presenting with respiratory signs in small ruminants reported from five agro-ecological zones in Tanzania. Small ruminants with clinical signs or postmortem lesions suggestive of respiratory involvement were subjected to clinical or postmortem examination. Samples from all examined animals were tested in the laboratory using conventional polymerase chain reaction (PCR) to confirm the tentative diagnosis.

**Results:** A total of 205 small ruminants were examined and tested, of these 72.2% and 20.8% were goats and sheep respectively. In goats, 79.1% (117/148) and sheep, 28.1% (16/57) were confirmed to have concurrent infections, and pneumonic pasteurellosis and peste des petits ruminants (PPR) for goats, and PPR for sheep being mostly involved diseases. Contagious caprine pleuropneumonia (CCPP) was detected in 16.1% (n=205) of the animals, and was significantly high in goats ( $p=0.003$ ,  $OR=7.3$ ) than sheep. Pneumonic manheimiosis (prevalence = 9.3%) was less likely to affect goats than sheep ( $p=0.047$ ,  $OR=0.38$ ). In goats (n=148), detection of all diseases was significantly ( $p<0.05$ ) low in clinically examined animals except pneumonic pasteurellosis and PPR, ( $p=0.056$ ,  $OR=2.1$ ) and ( $p=0.096$ ,  $OR=2.15$ ) respectively, though the difference was not significant. In sheep (n=57), CCPP was significantly ( $p=0.005$ ,  $OR=0.17$ ) more likely to be detected in clinically examined animals.

**Conclusion:** In investigations of outbreaks presenting with respiratory signs in small ruminants, it is important to consider concurrent infections in the interventions and control strategies to be deployed, which may include development and use of multivalent vaccines.

**Keywords:** Concurrent infections; clinical signs; diseases presenting with respiratory signs; outbreak investigation; pathological lesions.

## 1. INTRODUCTION

Outbreaks of diseases presenting with respiratory signs are reported in communities keeping small ruminants. Recently, reported outbreaks in Tanzania are characterized by persistency with continuous mortality resulting in significant losses due to loss of animals, low productivity and management costs [1]. In concurrent infections, the aetiological agents of involved diseases may act independently or interact with each other through various mechanisms, synergize or inhibit one another resulting into altered transmission dynamics, clinical presentation and severity and confounding effects of one aetiological agent to another at the individual or flock level [2,3,4]. For example, in controlled trials with multiple infecting parasites like *Theileria parva* and *Haemonchus contortus* [2]. In another study, individual level concurrent diseases, bovine tuberculosis and brucellosis and how they scaled up to produce population infection patterns [3]. Similarly, [4] proposed a study where two interacting nematodes effects were followed. In all these multiple infections, varying results were observed and these interactions altered the general outcome of the disease resulting in complicated diagnoses. This could be the case in the current persisting outbreaks which present with respiratory signs.

In recent studies, concurrent infections in outbreaks of diseases presenting with respiratory signs in small ruminants have been given a consideration [1,5,6]. However, in these studies, there were no considerations of the alterations in clinical signs, pathological lesions and epidemiological dynamics in some concurrent infections of the major transboundary diseases like CCPP and PPR. Furthermore, the role played by the respiratory bacterial pneumonia caused by the normal commensals of the respiratory tract *Pasteurella multocida* (*P. multocida*) and *Mannheimia haemolytica* (*M. haemolytica*) in disease dynamics, clinical presentation and severity has not been evaluated.

Contagious caprine pleuropneumonia is a classical disease of the respiratory system caused by *Mycoplasma capricolum* subsp. *capripneumonia* (*M. capripneumoniae*), a member of *Mycoplasma mycoides* (*M. mycoides*) "cluster" [7,8]. Contagious caprine pleuropneumonia lesions are localized within the respiratory system causing acute to chronic pneumonic conditions, the main clinical signs include, nasal discharges, coughing, respiratory distress, emaciation, posture with extended elbow whereas, pathological lesions are, serofibrinous pleurisy, serosanguinous hydrothorax, unilateral

lung inflammation and lung hepatization [1,9,10].

Paste des petits ruminants is caused by small ruminants morbillivirus (previously peste des petits ruminants virus) a member of genus *Morbillivirus* [1,11]. Peste des petits ruminants affects wild and domestic artiodactyls, including goats and sheep while pigs, and wild boars are considered as SRMV reservoirs [11]. Peste des petits ruminants primarily affects the digestive system [12], the major clinical signs are pyrexia, oculo-nasal discharge, necrotizing and erosive stomatitis, and diarrhea. Pathologically, PPR is presented with gastroenteritis and zebra stripes in the caeco-colic junction whereas bronchopneumonia set in following secondary bacterial infection [13].

Pneumonic pasteurellosis and pneumonic manheimiosis caused by the *P. multocida* and *M. hemolytica* respectively, the opportunistic bacteria of the respiratory system that cause bronchopneumonia under stressful conditions including infection with viruses and Mycoplasmas [1,14,15].

Despite the similarities in clinical signs and postmortem lesions for the diseases presenting with respiratory signs, the approach in investigations were limited to targeted diseases without consideration of possible concurrent infections. For instance [12,22] diagnosed only PPR, a disease known mostly to affect the digestive system despite, the presence of respiratory signs which could be due to secondary bacterial infections. Only recently, concurrent infections are being considered especially when obvious clinical signs suggestive of other diseases like Lumpy skin disease or goat and sheep pox [1,6].

Generally, in outbreaks of the diseases presenting with respiratory signs, the clinical signs and postmortem lesions at one time, are similar for different diseases but these diseases have not been investigated in the same outbreaks and the role the concurrent infections play in clinical presentation, disease severity and persistency have not been examined. This study examines the concurrent infections and the alterations in clinical and pathological changes associated, this will help in diagnosis and putting down of the proper interventions and control strategies.

## 2. MATERIALS AND METHODS

### 2.1 Study Areas

The areas involved in the study were all those from which outbreaks or sporadic outbreaks of diseases presenting with respiratory signs were reported. Outbreaks were investigated in the Southern highland zone in Chunya and Mbarali in Mbeya region, Iringa municipality and Kilolo in Iringa region. From the central zone, outbreak reports were received from Dodoma municipality whereas eastern zone reports were received from Mvomero in Morogoro region and Bagamoyo in Pwani region. Lake zone outbreak reports were received from Serengeti and northern zone (Korogwe in Tanga region and, Monduli in Arusha (Fig. 1).

### 2.2 Study Animals

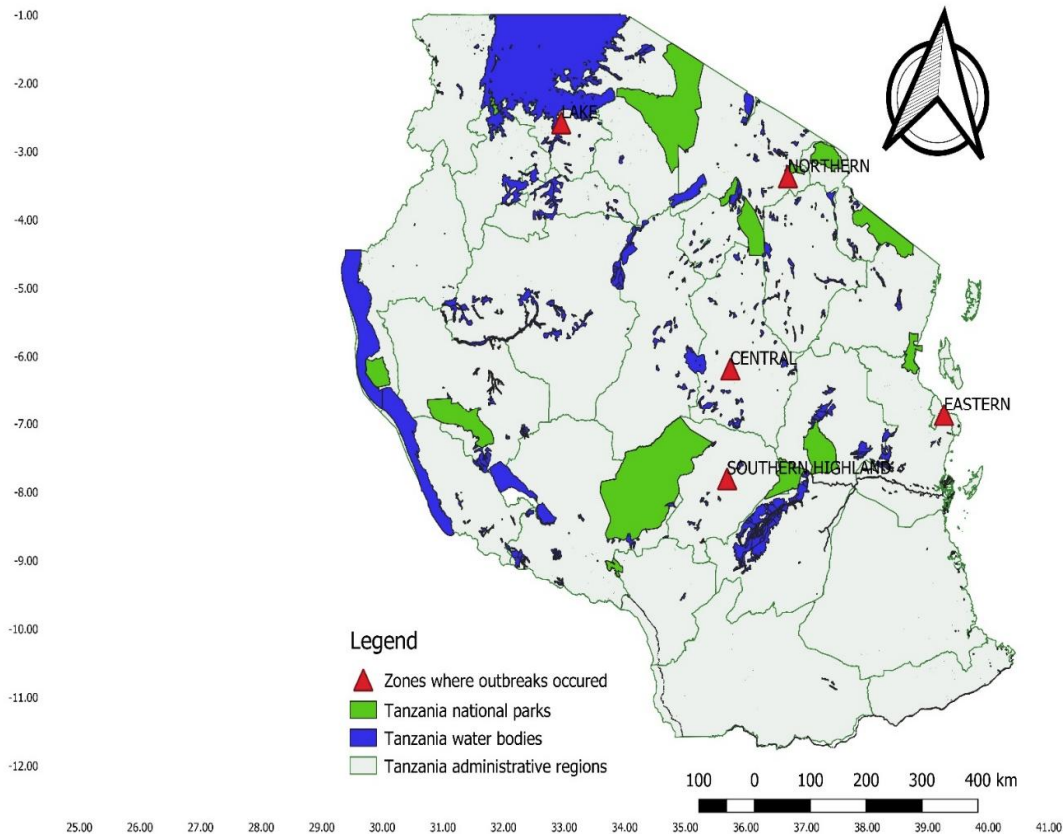
Small ruminants from the areas reported to have outbreaks of diseases presenting with respiratory signs. Inclusion criteria were presence of clinical signs or pathological lesions suggestive of involvement of the respiratory system.

### 2.3 Study Design

Outbreak investigation and individual animal examination were carried out between 2016 - 2018 following the procedures as described in the previous works [16,17]. A data sheet was prepared in Microsoft Word™ 2007, tested and used to record each case, individual animal data, observed clinical signs and pathological lesions during clinical and postmortem examination of cases during every call for outbreak investigation.

### 2.4 Sample Collection

Samples collected during clinical examination were whole blood collected using EDTA vacutainers tubes, nasal, oral and eye swabs and synovial fluid and from autopsied animals, pleural fluid were collected in RNA shield (Zymo Research Corporation, Irvin California). Also, from autopsied animals, intestinal, lung and lymph node sections were collected in Stuart Medium (HiMedia Laboratories Pvt Limited, India). Whole blood was briefly stored at 4°C and samples stored in RNA shield and Stuart Medium was stored at -20°C, before use. Extracted RNA and DNA were briefly kept at -80°C before analysis.



**Fig. 1. Map of Tanzania showing respective zones that reported outbreaks of diseases with respiratory signs**

## 2.5 Laboratory Testing of the Samples

### 2.5.1 DNA and RNA extraction

Genomic DNA (gDNA) was extracted using Quick-DNA™ Miniprep plus Kit Catalog No D4069 (Zymo Research Corporation, Orange, California). RNA was extracted using Quick-RNA™ Viral Kit Catalog No. R1035 (Zymo Research Corporation, Orange, California). Extractions were done according to manufacturers' instructions. Extracted RNA was used in the amplification of the SRMV nucleoprotein (N) gene and extracted gDNA were used to amplify the *M. mycoides* "cluster" 16S rRNA gene and specific gene for *M. capri*, *M. capricolum*, *P. multocida* and *M. haemolytica*.

### 2.5.2 *Mycoplasma capricolum* subsp *capripneumoniae* detection

Molecular detection of the *M. capripneumoniae* was carried out using PCR/REA technique [18].

Briefly, the 16S rRNA gene for members of the *M. mycoides* "cluster" was amplified by PCR. The amplification process was carried out with the set of primers as described in the previous study [19] (Table 1). Master Mix, PCR water and the template were mixed to 25 µl total volume, preheated in C100 touch thermal cycler (BIO-RAD®, Singapore) at 94°C for 5 minutes. This was followed by a 40 cycles of 95°C for 1 minute denaturation, 58°C for 1 minute, annealing 72°C for 2 minute elongation, held at 72°C for 10 minutes and 4°C holding to infinite. The PCR products were visualized in 0.5% DNA loading dye (EZ-Vision®, VWR Life science, California, USA) in 1.5% agarose, after a gel electrophoresis. The amplicons were digested using restriction enzyme *Pst*I, resulting into three fragments of 548 bp of the operon that was not ligated, 420 bp and 128 bp from the ligated operon indicating presence of *M. capripneumoniae*. The other members of the *M. mycoides* "cluster" had only two fragments 420 bp and 128 bp from ligated operons of the 16S rRNA gene fragment [18].

**Table 1. List of pair of primers used in the identification of target pathogens involved in outbreaks of diseases presenting with respiratory signs**

Pathogen	Primer set	Amplified gene	Reference
<i>M. mycoides</i> "cluster"	CAF5'-CGA AAG CGG CTT ACT GGC TTG TT-3' CAR5'-TTG AGA TTA GCT CCC CTT CAC AG-3'	16S rRNA	[19]
<i>M. capripneumoniae</i>	F5'-AGA CCC AAA TAA GCC ATC CA-3' R5'-CTT TCA CCG CTT GTT GAA TG-3'	<i>LppA</i>	[20]
<i>M. capri</i>	P4 5'-ACT GAG CAA TTC CTC TT-3' P6 5'-TTA AAT AAG TTT GTA TAT GAA T-3'	CAP-21 gene	[21]
SRMV	NP3-5- TCT CGG AAA TCG CCT CAC AGA CTG -3 NP4 -5- CCT CCT CCT GGT CCT CCA GAA TCT -3	Nucleoprotein (N) gene	[22]
<i>M. haemolytica</i>	MHSSA-5'-TTC ACA TCT TCA TCC TC-3' MHSSA-5'-TTT TCA TCC TCT TCG TC-3'	SSA- 1 gene	[23]
<i>P. multocida</i>	PmOUT-5'-AGG TGA AAG AGG TTA TG-3' PmOUT-5'-TAC CTA ACT CAA CCA AC-3'	Outer membrane protein 87 (Omp87).	[23]

### 2.5.3 Detection of other members of the *Mycoplasma mycoides* "cluster"

*Mycoplasma capricolum* subsp *capricolum* (*M. capricolum*), another member of the *Mycoplasma mycoides* "cluster" in the same subcluster with *M. capripneumoniae* was detected by amplification of *LppA* gene using specific primers (Table 1) as described in the previous study [20]. Briefly, the substrate, Master Mix and PCR water were made into a 25 µl total volume, amplification was done in C100 touch thermal cycler (BIO-RAD®, Singapore). Initial denaturation was set at 94°C for 2 min, followed by 35 cycles of denaturation at 94°C for 30 seconds, annealing at 51°C for 30 seconds, and extension at 72°C for 60 seconds. Amplified gene fragment expected size was 1356 bp [20]. The other member of the *M. mycoides* "cluster" from the *M. mycoides* subcluster, *M. capri* [24] was detected by amplification of the CAP-21 gene using specific primers (Table 1) as described in the previous study [21]. Briefly, the substrate, master mix and PCR water were mixed in 25 µl total and amplified in volume in C100 touch thermal cycler (BIO-RAD®, Singapore). The initial denaturation was set at 94°C for 2 min, followed by 30 cycles of denaturation at 94°C for 30 seconds, annealing at 55°C for 60 seconds, and extension at 72°C for 90 seconds. Amplified gene fragment expected size was 395 bp [21].

### 2.5.4 Detection of *Mannheimia hemolytica* and *Pasteurella multocida*

Respiratory system inhabitants *M. hemolytica* and *P. multocida*, serotype specific antigen (SSA) and outer membrane protein 87 (Omp87) genes respectively, were amplified from the extracted gDNA [23] with some modifications. Briefly, the amplification process was done in C100 touch thermal cycler (BIO-RAD®, Singapore), in 25 µl total volume of substrate, Master Mix, PCR water and specific primers (Table 1) targeting the outer membrane protein 87 (Omp87) for *M. haemolytica* and serotype specific antigen 1 (SSA-1) for *P. multocida*. The amplification cycle started with initial denaturation at 94°C for 2 minutes, followed by 40 cycles of denaturation at 94°C for 45 seconds, annealing at 45°C, and elongation at 72°C for 1 minute. The resulting amplicons were detected in 1.5% agarose gel stained with 0.5% DNA loading dye (EZ-Vision®, VWR Life Science, California, USA).

### 2.5.5 Detection of small ruminants' morbillivirus (SRMV)

Small ruminants morbillivirus (formally peste des petits ruminants virus), a member of the genus *Morbillivirus* and causative agent of peste des petits ruminants (PPR) was also detected by amplification of the Nucleoprotein (N) gene using specific NP3/NP4 (Table 1) in one-step Reverse Transcriptase Polymerase Chain Reaction (RT-

PCR), as used in the previous study [22]. Briefly, a reverse transcription was carried at 45°C for 30 min, then initial denaturation at 95°C for 30 seconds which was followed by 40 cycles of denaturation at 95°C for 30 seconds, annealing at 55°C, elongation at 72°C, held at 72°C for 10 minutes and 4°C holding to infinite. The resulting amplicon was then run in the 1.5% agarose gel electrophoresis, stained with 0.5% DNA loading dye (EZ-Vision®, VWR Life Science, California, USA). The resulting amplicon band size was 351 bp [22].

**2.6 Data analysis**

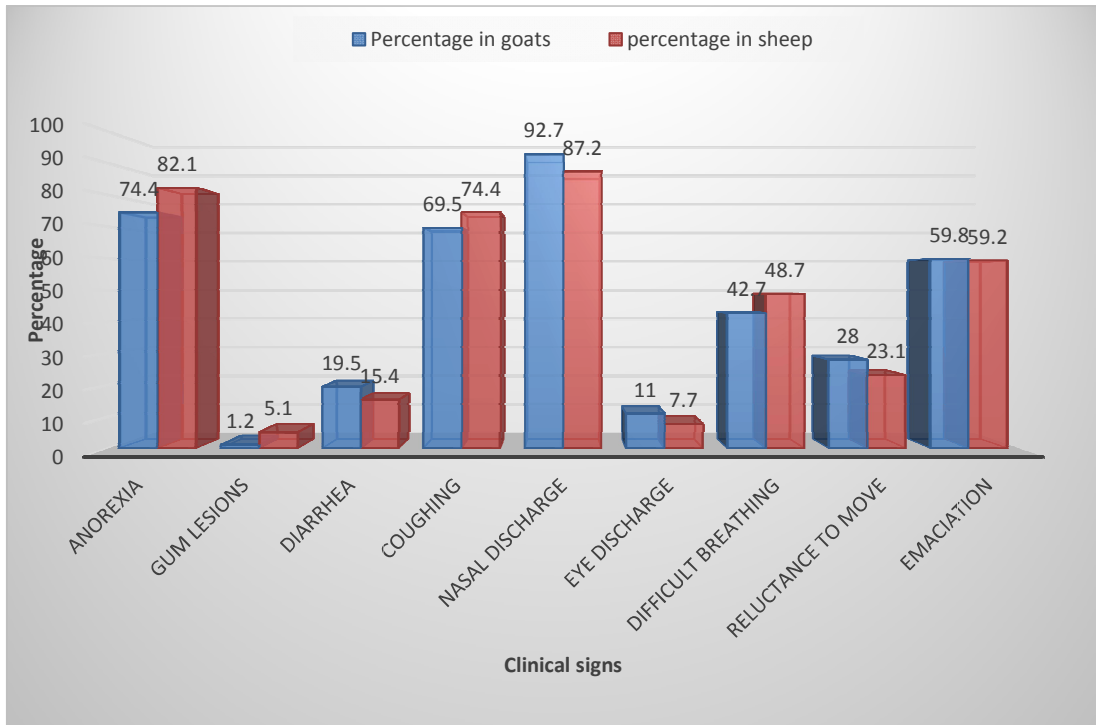
A detailed Data analysis using R version R. 3.5.1 [25] is presented. Odds ratios were calculated using the molecular data to assess the association of the diseases with species and status of animals at examination where  $p < 0.05$  was considered significant.

**3. RESULTS AND DISCUSSION**

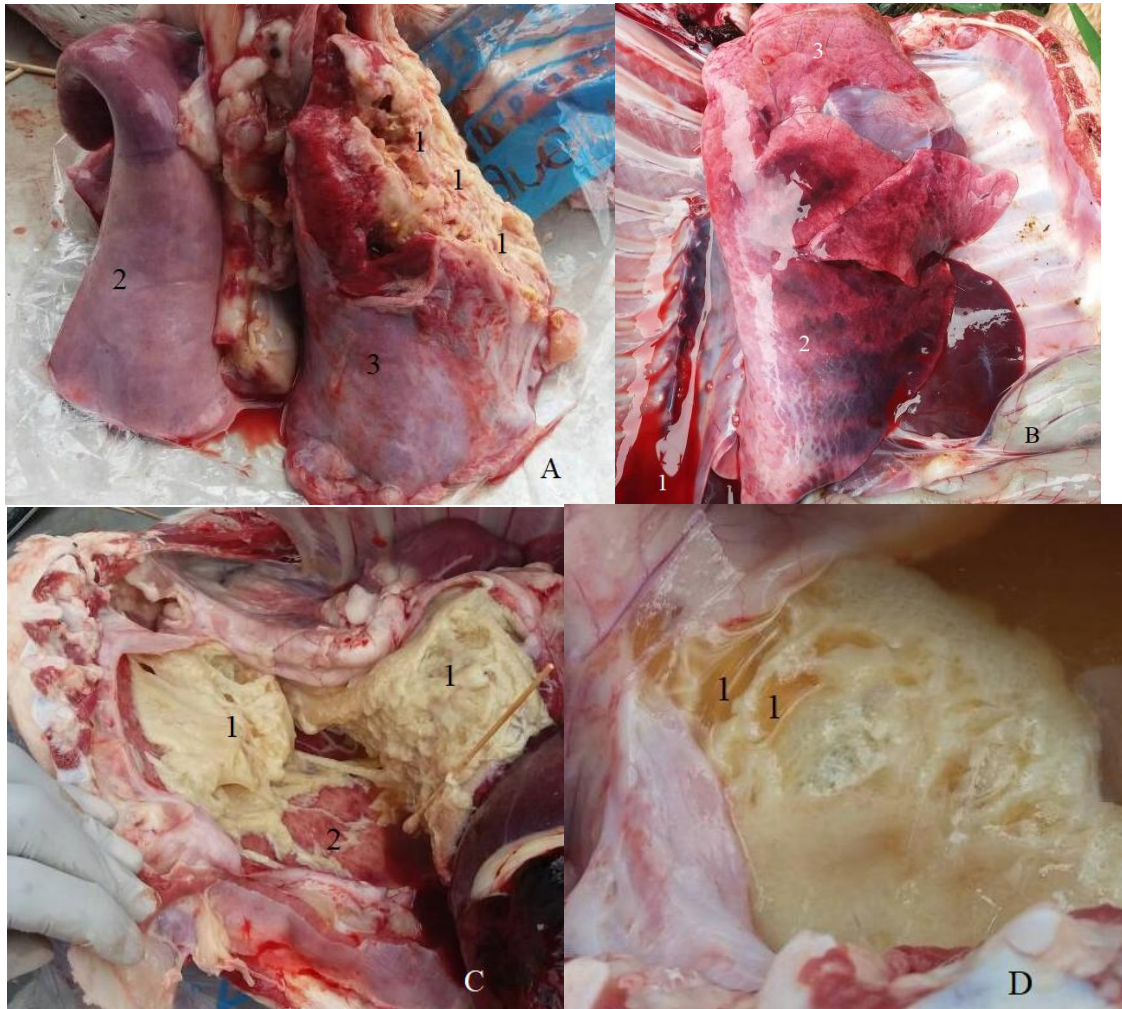
**3.1 General Observations of Animals**

A number of clinical signs and postmortem lesions were observed in goats and sheep

examined. The clinical signs and postmortem lesions observed were suggestive of different diseases. The main clinical signs observed in different cases include, anorexia, vesicular lesions on the gums, diarrhea, coughing, nasal discharges, eye discharge (lacrimation), difficult breathing, reluctance to move and emaciation. Generally the clinical signs were equally distributed among goats and sheep except nasal discharge and reluctance to move which were more observed in goats and diarrhea which was more observed in sheep. A combination of nasal discharge, anorexia and coughing were the most prevalent clinical signs in both goats and sheep (Fig. 2). On postmortem examination, the main postmortem lesions observed included, consolidation of lung tissue, froth in the trachea, increased straw coloured serosanguinous fluid (hydrothorax), congested nasal cavity, firm lung lobes, yellowish nodules in congested lung lobes, soft hemorrhagic lymph nodes, lung attachment to the chest wall and unilateral or asymmetric lung inflammation (Fig. 3). High proportions of congested nasal cavity was observed in sheep and a combination of consolidated lungs, vesicular lesions in digestive system, attachment to the chest wall were the most prevalent postmortem lesions in goats (Fig. 4).



**Fig. 2. Percentage proportions of clinical signs observed in examined cases in small ruminants**



**Fig. 3. Postmortem lesions picked during outbreak investigations**

**Legend** 3A – 1-areas of attachment, 2&3 - asymmetrical inflamed lung lobes, 3B – 1-serosanguinous fluid, 2-unilateral inflamed lung lobe, 3C – 1-serofibrinous exudate on areas of lung and ribs attachment and 3D-1 serosanguinous fluid

### 3.2 Conventional PCR Results Analysis

Out of 205 small ruminants tested, 72.2% (148) and 20.8% (57) were from goats and sheep respectively, the overall prevalence (Fig. 5) revealed that, 16.1% (33) of the animals were positive for CCPP with a significant difference between species, goats being 7.3 more likely to be positive ( $p = 0.003$ ). Significant difference ( $p < 0.0001$ ) was also noted in detection of *M. capricolum* and *M. capri* pneumonia where goats were more likely to be positive than sheep, but in pneumonic manheimiosis, goats were less likely to be positive ( $p = 0.047$ ). There were no statistical difference between species in pneumonic pasteurellosis and PPR (Table 2).

### 3.3 Conventional PCR Results Analysis in Goats

A total of 148 goats were examined, majority of them, 79.1% (117) had concurrent infections and these were detected from 70.9% (105) clinically examined animals and 29.1% (43) autopsied animals. Concurrent diseases detected in high proportions were *M. capricolum* pneumonia and PPR, 11.1% (13), *M. capricolum* pneumonia and pneumonic pasteurellosis, 9.4% (10) and pneumonic pasteurellosis and PPR, 9.4% (10). Detection of all diseases was significantly low in clinically examined animals ( $p < 0.05$ ), except in the detection of pneumonic pasteurellosis and PPR

where the detection was high in clinically examined animals but with no statistical significance ( $p=0.056, 0.096$ ) respectively (Table 3).

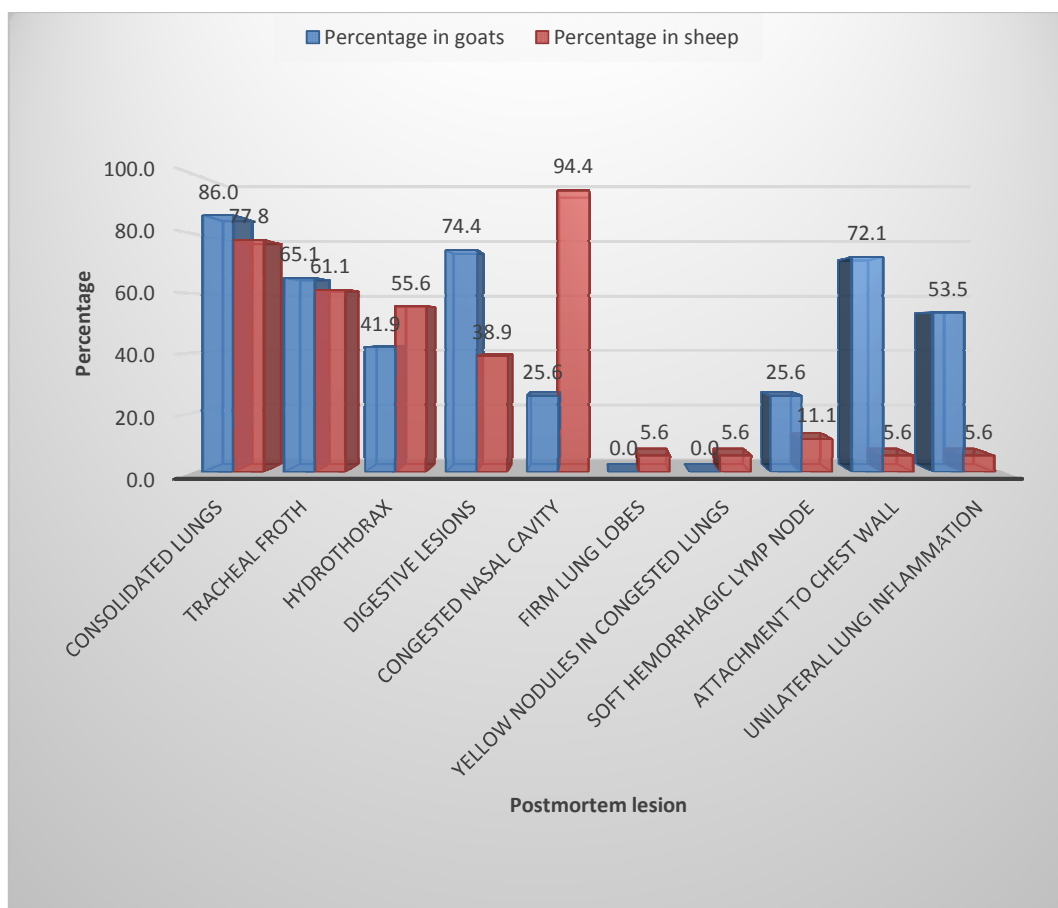
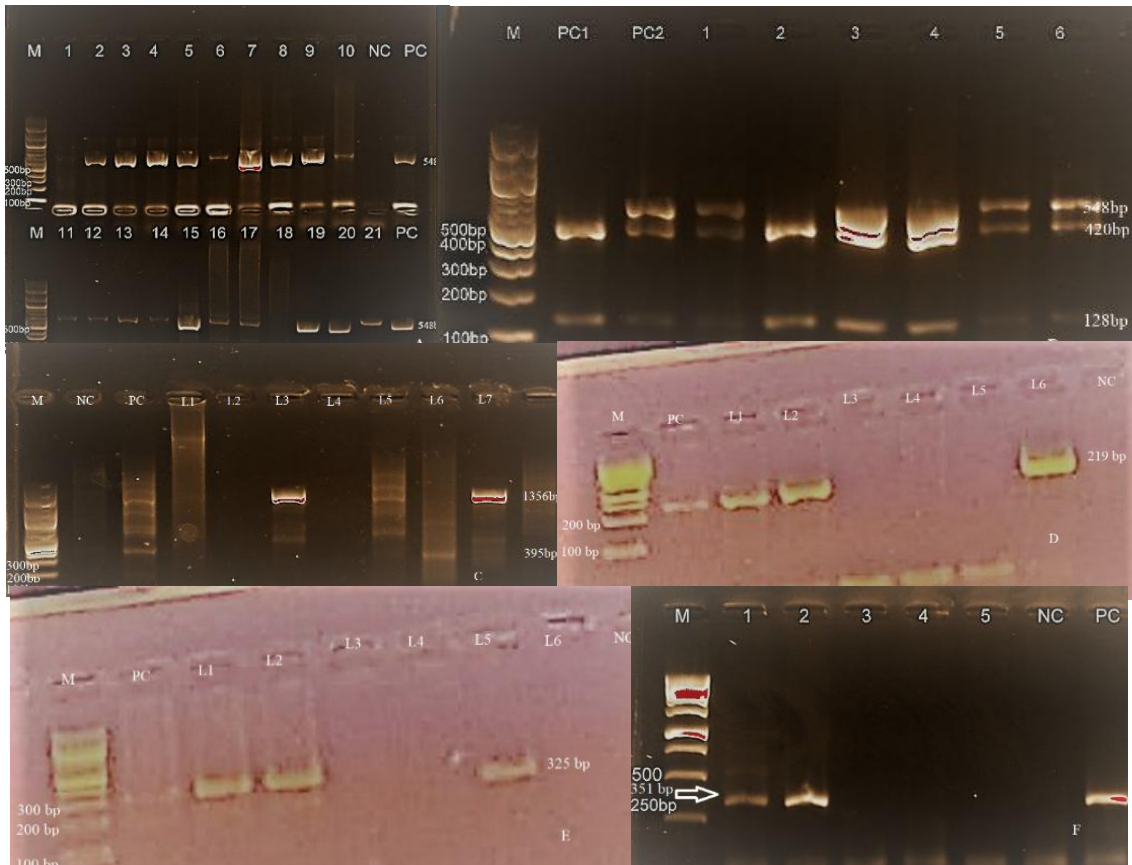


Fig. 4. Percentage proportions of postmortem lesions observed in examined cases in small ruminants

Table 2. Prevalence of diseases presenting with respiratory signs in relation to goats and sheep in Tanzania

Variable	Category	Overall prevalence (n=205)	Total	Positives	OR (95% ci)	P-value
Contagious caprine pleuropneumonia (CCPP)	Goats	16.1	148	31 (20.9)	7.3 (2.3 - 23.5)	0.003
	Sheep		57	2 (3.5)		
<i>M. capricolum</i> pneumonia	Goats	4.4	148	9 (6.1)	0.1 (0.03 - 0.2)	<0.0001
	Sheep		57	0 (0.0)		
<i>M. capri</i> pneumonia	Goats	6.8	148	14 (9.5)	0.1 (0.05 - 0.2)	<0.0001
	Sheep		57	0 (0.0)		
Pneumonic pasteurellosis	Goats	42.4	148	59 (39.9)	0.7 (0.4 - 1.2)	0.234
	Sheep		57	28 (49.1)		
Pneumonic manheimiosis	Goats	9.3	148	10 (6.8)	0.38 (0.15 - 1)	0.047
	Sheep		57	9 (15.8)		
Peste des petits ruminants (PPR)	Goats	25.9	148	38 (25.7)	1 (0.5 - 1.8)	0.928
	Sheep		57	15 (26.3)		





**Fig. 5. Gel electrophoresis picture showing the A-16S rRNA gene (548 bp), B – PstI restricted 16S rRNA gene (548 bp, 420 bp and 128 bp), C –LppA gene (1356 bp), CAP-21 gene (395), D-Omp87 gene (219 bp), E- SSA-1 gene (325 bp) and F – Nucleoprotein (N) gene (351 bp)**

Legends:

2A: Positive control = *M. capripneumoniae* and *M. capricolum*, NC= Negative control.

2B. PC1=Positive control *M. capri*, PC2 = Positive control *M. capripneumoniae*, M=100bp ladder, *M. capripneumonia* (1, 5, 6) and Other *M. mycoides* "cluster" (2, 3, 4).

2C. PC=Positive controls, NC = Negative control, 1kb=ladder, *M. capricolum* (3, 5, 7) and *M. capri* (3, 6, 9).

2D: PC = positive control for *P. multocida* NC = negative control, M=100bp ladder. *P. multocida* (L1, L2 and L6),

PC = positive control for *M. haemolytica*, NC = negative control, M=100bp ladder. *M. haemolytica* (L1, L2 and L5)

2F: PC = Positive control, NC = Negative control, M = ladder. SRMV (1 & 2)

### 3.4 Conventional PCR Results Analysis in Sheep

In sheep, a total of 57 animals were examined and 28.1% (16) of them had concurrent infections, and, were detected from 68.4% (39) of clinically examined animals and 31.6% (18) of autopsied animals. Higher proportions of concurrent detected diseases was between pneumonic pasteurellosis and PPR 31.3% (5) and pneumonic pasteurellosis and pneumonic manheimiosis 25% (4). Only in CCPP, the difference in detection was significant, being more likely detected in clinically examined animals than in autopsied animals ( $p=0.005$ ). In

all other diseases, there were no statistical difference but the odds ratio in detection of pneumonic pasteurellosis and PPR were 1.79 and 1.38 more likely to occur in clinically examined animals compared to autopsied animals (Table 4).

### 3.5 Discussion

Contagious caprine pleuropneumonia (CCPP) and peste des petits ruminants (PPR) are diseases of high economic importance in the small ruminants industry especially in resource limited households in developing countries [26], including Tanzania. In the same way, pneumonic

pasteurellosis and pneumonic mannheimiosis, independently or as secondary to virus and/or mycoplasma infections contributed significantly to socio-economic losses [27]. In the present study clinical and postmortem lesions, molecular prevalence and proportions of detection in species, clinically and postmortem examined animals for CCPP and other *Mycoplasma mycoides* “cluster” pneumonias, PPR, pneumonic mannheimiosis and pneumonic pasteurellosis were assessed.

Our major findings of the clinical signs and postmortem lesions in the reported outbreaks in both goats and sheep were nasal discharges, anorexia, coughing, emaciation, difficult breathing, reluctance to move and diarrhea which were all non-specific to any disease, these findings are in agreement to the previous findings [1]. In the presence of such non-specific clinical

signs presence of reliable laboratory tests is highly advocated. Major postmortem lesions revealed included, consolidated lungs, tracheal froth, hydrothorax and digestive lesions (vesicular lesions on the gums and intestinal hemorrhages) in both goats and sheep, these findings are similar to those reported in previous study [1] in PPR and concurrent infections and [28] in CCPP. Congested nasal discharge was highly observed in sheep, this could be associated with the fact that apparently healthy sheep infested with internal parasites such as *Oestrus ovis* may have congested nasal cavity [29]. Lung attachment to the chest wall and unilateral or asymmetric lung inflammation were observed more in goats and this could be due to the fact that, the lesions are more associated with CCPP which is primarily a disease of goats [9,28].

**Table 3. Prevalence of diseases presenting with respiratory signs in goats with relation to the examination status**

Variable	Category	Overall prevalence (n=148)	Total	Positives	OR (95% ci)	P-value
Contagious caprine pleuropneumonia (CCPP)	CSE	20.9	105	15 (14.3)	0.28 (0.14 -0.56)	0.002
	PME		43	16 (37.2)		
<i>M. capricolum</i> pneumonia	CSE	6.1	105	1 (0.95)	0.04 (0.005 - 0.34)	<0.0001
	PME		43	8 (18.6)		
<i>M. capri</i> pneumonia	CSE	9.5	105	6 (5.7)	0.26 (0.10 -0.71)	0.015
	PME		43	8 (18.6)		
Pneumonic pasteurellosis	CSE	39.9	105	47 (44.8)	2.1 (1.16 - 3.78)	0.056
	PME		43	12 (27.9)		
Pneumonic mannheimiosis	CSE	6.8	105	3 (2.9)	0.15 (0.04 -0.55)	0.003
	PME		43	7 (16.3)		
Peste des petits ruminants (PPR)	CSE	25.7	105	31 (29.5)	2.15 (1.09 - 4.25)	0.095
	PME		43	7 (16.3)		

Legend: CSE = Clinical signs examination, PME = Postmortem examination

**Table 4. Prevalence of diseases presenting with respiratory signs in sheep with relation to the examination status**

Variable	Category	Prevalence (n=57)	Total	Positives	OR (95% ci)	Z value	P-value
Contagious caprine pleuropneumonia (CCPP)	CSE	3.5	39	2 (15.1)	0.17 (0.09 - 0.35)	-2.788	0.005
	PME		18	0 (0)			
Pneumonic pasteurellosis	CSE	49.1	39	21 (53.8)	1.79 (1.02 - 3.14)	1.012	0.331
	PME		18	7 (39.4)			
Pneumonic mannheimiosis	CSE	15.8	39	6 (15.4)	0.91 (0.42 - 1.93)	-0.125	0.897
	PME		18	3 (16.7)			
Peste des petits ruminants PPR	CSE	26.3	39	11 (28.2)	1.38 (0.72 - 2.62)	0.478	0.631
	PME		18	4 (22.2)			

Legend: CSE = Clinical signs examination, PME = Postmortem examination

The study revealed that, 20.9% of goats and 15.1% of sheep were positive for CCPP the findings which are in agreement with previous study which reported 31.2% of goats and 12.9% of sheep being positive to CCPP in Borana zone, Southern Oromia, Ethiopia [28]. Contrary to this study, low prevalence of CCPP in goats was reported in another study in Ethiopia [30]. Contagious caprine pleuropneumonia (CCPP) has been also reported in goats and sheep in Tanzania [9,31,32]. It was also revealed in this study that, 9.5% of goats had *M. capri pneumonia* whereas 6.8% had *M. capricolum pneumonia*, which together form a conglomerate of clinical signs hampering diagnosis [33,34]. Variations in the prevalence in those different studies may be attributed to differences in study areas, diagnostic techniques used, management and production systems and the status of the animals at the time of sampling.

In our study, PPR was detected in 25.7% and 26.3% of goats and sheep respectively, the findings which are in agreement with the previous report in Tanzania [35] who reported a true prevalence of 48.3% and 45.5% for goats and sheep, respectively. Our findings were however far below the findings reported in another study in Ngorongoro, where PPR seroprevalence was reported to be 74.6% [1]. The variations in the prevalence for PPR in both goats and sheep may be due to difference in the diagnostic tests used, status of the animals sampled and the geographical location and livestock keeping systems.

Based on molecular analysis, the current study confirmed the presence of pneumonic pasteurellosis, and pneumonic mannheimiosis for the first time in Tanzania. Pneumonic pasteurellosis was confirmed in 49.1% of sheep compared to 39.9% in goats whereas, mannheimiosis was 15.8% in sheep and 6.8% in goats. Higher detection of both pneumonic pasteurellosis and pneumonic mannheimiosis in sheep than in goats was also reported in the previous study [27], where sheep had higher prevalence (37.1%). Presence of pneumonic pasteurellosis and pneumonic mannheimiosis as secondary infecting diseases in small ruminants may further complicate the diagnosis of diseases presenting with respiratory signs.

Our study also reports statistical significance between species in detecting CCPP, goats were more likely to be positive than sheep (OR =7.3), this is due to the fact that sheep is not a natural

host to *M. capripneumonia*. Similarly, sheep was a protective factor for *M. capricolum* and *M. capri pneumonia* (OR = 0.1) for both, this could be due to the fact that both are known to affect more goats [36,37]. Furthermore, in goats, all diseases except pneumonic pasteurellosis and PPR, were more likely to be diagnosed from the postmortem examined animals which is in agreement to the previous report [28] for CCPP. Pneumonic pasteurellosis and PPR were highly detected in clinically examined animals and this could be due to the fact that pneumonic pasteurellosis can easily be picked by swabs in the upper respiratory system and PPR can manifest and be detected from the nasal swabs samples [1]. On the other hand, CCPP in sheep was more likely to be detected in clinically examined sheep (OR=0.17) and this could be explained by the fact that, CCPP is not known to cause disease in sheep, but can harbour *M. capripneumonia*, the causative agent for CCPP [9].

#### 4. CONCLUSION

In the outbreaks presenting with respiratory signs, the major endemic and transboundary diseases CCPP and PPR are involved. Furthermore, there is also high involvement of pneumonic pasteurellosis and pneumonic mannheimiosis which occur as secondary to CCPP or PPR infection or independently, also there is high proportions of concurrent occurring diseases in the same outbreaks. This results in complications in diagnosis, persistency of the outbreaks due to misdiagnosis, partial diagnosis and improper control strategies. It is advised to consider differential diagnoses in the interventions and control strategies including developing of simple multiple disease diagnostic kits and use of multivalent vaccines.

#### CONSENT

Animal sampling was done on consent of the livestock owners and all authors declare that written informed consent was obtained from the livestock owners for publication of the obtained information and accompanying images.

#### ETHICAL APPROVAL

Handling of the animals sampled during the course of this research work followed all the stipulated animal rights as per the Universal Declaration of the Animal Welfare and Tanzania Animal Welfare Act 2008.

## ACKNOWLEDGEMENTS

The authors are grateful to the support of the Bill & Melinda Gates foundation through the Program for Enhancing Health and Productivity in Livestock (PEHPL) at the Nelson Mandela Institution for Science and Technology, Arusha Tanzania, which is sponsoring Andrew Chota's PhD studies. We are also grateful to the support of the CIRAD through Prof. Thiaucourt who kindly assisted us with the positive controls we used in this study. The comments from Prof. Sarah Cleaveland during the writing of this manuscript are highly acknowledged. The cooperation of the District Veterinary Officers, Livestock Field Officers and livestock keepers in the study areas is very highly appreciated.

## COMPETING INTERESTS

Authors have declared that no competing interests exist.

## REFERENCES

1. Kgotlele T, Chota AC, Chubwa CC, Nyasebwa O, Lyimo B, Torsson E, et al. Detection of peste des petits ruminants and concurrent secondary diseases in sheep and goats in Ngorongoro district, Tanzania. *Comp Clin Path.* 2018;1-5. (Accessed 02 February 2019) Available: <https://doi.org/10.1007/s00580-018-2848-5>
2. Thumbi SM, Bronsvort BMDC, Poole EJ, Kiara H, Toye PG, Mbole-Kariuki MN, et al. Parasite co-infections and their impact on survival of indigenous cattle. *PLoS ONE.* 2014;9(2). (Accessed 11 September 2018) Available: [e76324](https://doi.org/10.1371/journal.pone.0076324) DOI: 10.1371/journal.pone.0076324
3. Gorsich EE, Etienne RS, Medlock J, Beechler BR, Spaan JM, Spaan RS, et al. Interactions between chronic diseases: Asymmetric outcomes of co-infection at individual and population scales. 2017;1-30. (Accessed 13 November 2018) Available: <https://arxiv.org/pdf/1712.00919.pdf>
4. Lello JM, McClure SJ, Tyrrell K, Viney ME. Predicting the effects of parasite co-infection across species boundaries. *Proc. R. Soc. B.* 2018;285:20172610. (Accessed 14 January 2019) Available: [http://dx.doi.org/10.1098/rspb.2017.2610](https://doi.org/10.1098/rspb.2017.2610).
5. Settypalli TBK, Lamien CE, Spargser J, Lelenta M, Wade A, Gelaye E, et al. One-step multiplex RT-qPCR assay for the detection of peste des petits ruminants virus, *Capripoxvirus*, *Pasteurella multocida* and *Mycoplasma capricolum* subspecies *capripneumoniae*. *PLoS One.* 2016;11(4): 14. DOI: 10.1371/journal.pone.0153688
6. Birindwa BA, George GC, Ntagereka BP, Christopher O, Lilly BC. Mixed infection of peste des petits ruminants and Capripox in goats in South Kivu, Democratic Republic of Congo. *J Adv Vet Anim Res.* 2017;7710: 348-355.
7. Pettersson B, Leitner T, Ronaghi M, Bölske G, Uhleń MS, Johansson KE. Phylogeny of the *Mycoplasma mycoides* "cluster" as determined by sequence analysis of the 16S rRNA genes from the two rRNA operons. *J Bacteriol.* 1996;178(14):4131-4142.
8. Manso-Silvan L, Perrier X, Thiaucourt F. Phylogeny of the *Mycoplasma mycoides* "cluster" based on analysis of five conserved protein-coding sequences and possible implications for the taxonomy of the group. *Int J Syst Evol Microbiol.* 2007;57:2247-2258.
9. Kusiluka LJM, Semuguruka WD, Kazwala RR, Ojeniyi B, Friis NF. Demonstration of *Mycoplasma capricolum* subsp. *capripneumoniae* and *Mycoplasma mycoides* subsp. *mycoides* small colony type in outbreaks of caprine pleuropneumonia in Eastern Tanzania. *Acta Vet Scand.* 2000;41:311-319.
10. Taunde PA, Argenta FF, Bianchi RM, De Cecco BS, Vielmo A, Lopes BC, et al.. *Mannheimia haemolytica* pleuropneumonia in goats associated with shipping stress. *Ciencia Rural, Santa Maria.* 2019;49:01. (Accessed 26 February 2019) Available: [http://dx.doi.org/10.1590/0103-8478cr20180621](https://doi.org/10.1590/0103-8478cr20180621)
11. Schulz C, Fast C, Schlottau K, Hoffmann B, Beer M. Neglected hosts of small ruminant Morbillivirus. *Emerg Infect Dis.* 2018;24(12):2334-2337.
12. Truong T, Boshra H, Embury-Hyatt C, Nfon C, Gerds V, Tikoo S, et al. Peste des petits ruminants virus tissue tropism and pathogenesis in sheep and goats following experimental infection. *PLoS ONE.* 2014;9(1).

- (Accessed 03 February 2019)  
DOI: 10.1371/journal.pone.0087145
13. Balamurugan V, Sen A, Venkatesan G, Rajak KK, Bhanuprakash V, Sing RK. Study on passive immunity: Time of vaccination in kids born to goats vaccinated against peste des petits ruminants. *Virologia Sinica*. 2012;27(4):228-233.
  14. Roeder PL, Obi TU. Recognizing Peste des Petits Ruminants: Field Manual; 2010. (Accessed 11 March 2019)  
Available: [www.fao.org/docrep/003/x1703e/x1703e00.HTM](http://www.fao.org/docrep/003/x1703e/x1703e00.HTM)
  15. Mohamed RA, Abdelsalam EB. A review on pneumonic pasteurellosis (Respiratory Mannheimiosis) with emphasis on pathogenesis, virulence mechanisms and predisposing factors. *Bulg J Vet Med*. 2008;11(3):139-160.
  16. Huang FI, Bayona M. Disease outbreak investigation; 2004. (Accessed 13 December 2018)  
Available: <http://www.epa.gov/region01/sup erfund /sites /wellsgh>
  17. King J, Dodd D, Roth L, Editors. The Necropsy Book: A Guide for Veterinary Students, Residents, Clinicians, Pathologists, and Biological Researchers. 4<sup>th</sup> Ed. Illinois: Charles Louis Davis Foundation for the Advancement of Veterinary and Comparative Pathology; 2006.
  18. Bölske G, Mattsson J, Bascunãna CR, Bergström K, Wesonga H, Johansson KE. Diagnosis of contagious caprine pleuropneumonia by detection and identification of *Mycoplasma capricolum* subsp. *capripneumoniae* by PCR and restriction enzyme analysis. *J Clin Microbiol*. 1996;34(4):785-791.
  19. Bascunana CR, Matisson JG, Bölske G, Johansson K. Characterization of the 16S rRNA genes from *Mycoplasma sp.* strain F38 and development of an identification system based on PCR. *J Bacteriol*. 1994;176(9):2577-2586.
  20. Monnerat MP, Thiaucourt F, Nicolet JS, Frey J. Comparative analysis of the *LppA* locus in *Mycoplasma capricolum* subsp. *capricolum* and *Mycoplasma capricolum* subsp. *capripneumoniae*. *Vet Microbiol*. 1999;69:157-172.
  21. Hotzel H, Sachse K, Pfützner H. Rapid detection of *Mycoplasma bovis* in milk samples and nasal swabs using the polymerase chain reaction. *J App Bacteriol*. 1996;80:505-510.
  22. Kgotlele T, Macha ES, Kasanga CJ, Kusiluka LJM, Karimuribo ED, Van Doorselaere J, et al. Partial genetic characterization of peste des petits ruminants virus from goats in Northern and Eastern Tanzania. *Transbound Emerg Dis*. 2014b;61:56-62.
  23. Hawari AD, Hassawi DS, Sweiss M. Isolation and identification of *Mannheimia haemolytica* and *Pasteurella multocida* in sheep and goats using biochemical tests and random amplified polymorphic DNA (RAPD) analysis. *J Biol Sci*. 2008;8(7): 1251-1254.
  24. Manso-Silvan L, Vilei EM, Sachse K, Djordjevic SP, Thiaucourt F, Frey J. *Mycoplasma leachii* sp. nov. as a new species designation for *Mycoplasma sp.* bovine group 7 of Leach, and reclassification of *Mycoplasma mycoides* subsp. *mycoides* LC as a serovar of *Mycoplasma mycoides* subsp. *capri*. *Int J Syst Evol Microbiol*. 2009;59(6):1353-1358.
  25. R Core Team. R. A Language and Environment for Statistical Computing Vienna, Austria. (Accessed 13 May 2018)  
Available: <http://www.R-project.org>
  26. World Organization for Animal Health (OIE) and Food and Agricultural Organization (FAO). Global control and eradication of peste des petits ruminants: Investing in veterinary systems, food security and poverty alleviation. (Accessed 21 Oct 2018)  
Available: <http://www.oie.int/eng/PPR2015-EN>
  27. Alemneh T, Tewodros A. Sheep and goats pasteurellosis: Isolation, identification, biochemical characterization and prevalence determination in Fogera Woreda, Ethiopia. *J Cell Anim Biol*. 2016;10(4):22-29.
  28. Teshome D, Sori T, Sacchini F, Wieland B. Epidemiological investigations of contagious caprine pleuropneumonia in selected districts of Borana zone, Southern Oromia, Ethiopia. *Trop Anim Health Prod*. 2019;51:703-711.
  29. Jacquiet P, Dorchies P. Towards a lower prevalence of *Oestrus ovis* infections in sheep in a temperate climate (South West France). *Vet. Res*. 2002;33:449-453.
  30. Abrhaley A, Ejo M, Fentie T. Seroprevalence and risk factors associated with contagious caprine pleuropneumonia

- in Western Amhara, Northwest Ethiopia. J Vet Med.; 2019.  
(Accessed 12 August 2019)  
Available: <https://doi.org/10.1155/2019/9878365>
31. Mbyuzi AO, Komba EVG, Cordery-Cotter R, Magwisha HB, Kimera SI, Kambarage DM. Descriptive survey of Peste des Petits ruminants and contagious caprine pleuropneumonia outbreaks in traditional goat flocks in Southern Tanzania: Producers' concerns, knowledge and attitude. Livest Res Rural Dev; 2014.  
Available: <http://www.lrrd.org/lrrd27/4/mbyu27071.html>
32. Chota A, Shirima G, Kusiluka L. Risk factors associated with *Mycoplasma capricolum* subspecies capripneumoniae and morbillivirus infection in small ruminants in Tanzania. Trop Anim Health Prod.; 2019.  
(Accessed 03 September 2019)  
Available: <https://doi.org/10.1007/s11250-019-01981-4>
33. Yatoo MI, Parray OR, Bashir ST, Muheet, Bhat RA, Gopalakrishnan A, et al. Contagious caprine pleuropneumonia – a comprehensive review. Vet Q. 2019;39(1): 1–25.
34. Jaÿ M, Tardy F. Contagious agalactia in sheep and goats: Current perspectives. Veterinary Medicine: Research and Reports. 2019;10:229–247.
35. Torsson E, Berg M, Misinzo G, Herbe I, Kgotlele T, Päärni M, et al. Seroprevalence and risk factors for peste des petits ruminants and selected differential diagnosis in sheep and goats in Tanzania. Infect Ecol Epidemiol. 2017;7:1.  
(Accessed 21 March 2019)  
DOI: 10.1080/20008686.2017.1368336
36. Bergonier D, Berthelot X, Poumarat F. Contagious agalactia of small ruminants: Current knowledge concerning epidemiology, diagnosis and control. Rev Sci Tech Off int Epiz. 1997;16(3):848-873.
37. Johnson GC, Fales WH, Shoemake BM, Adkins P, Middleton JR, Williams F, et al. An outbreak of *Mycoplasma mycoides* subspecies *capri* arthritis in young goats: A case study. J Vet Diagn Invest. 2019;31(3): 453-457.

© 2020 Chota et al.; This is an Open Access article distributed under the terms of the Creative Commons Attribution License (<http://creativecommons.org/licenses/by/4.0>), which permits unrestricted use, distribution, and reproduction in any medium, provided the original work is properly cited.

*Peer-review history:*

*The peer review history for this paper can be accessed here:*  
<http://www.sdiarticle4.com/review-history/58592>